

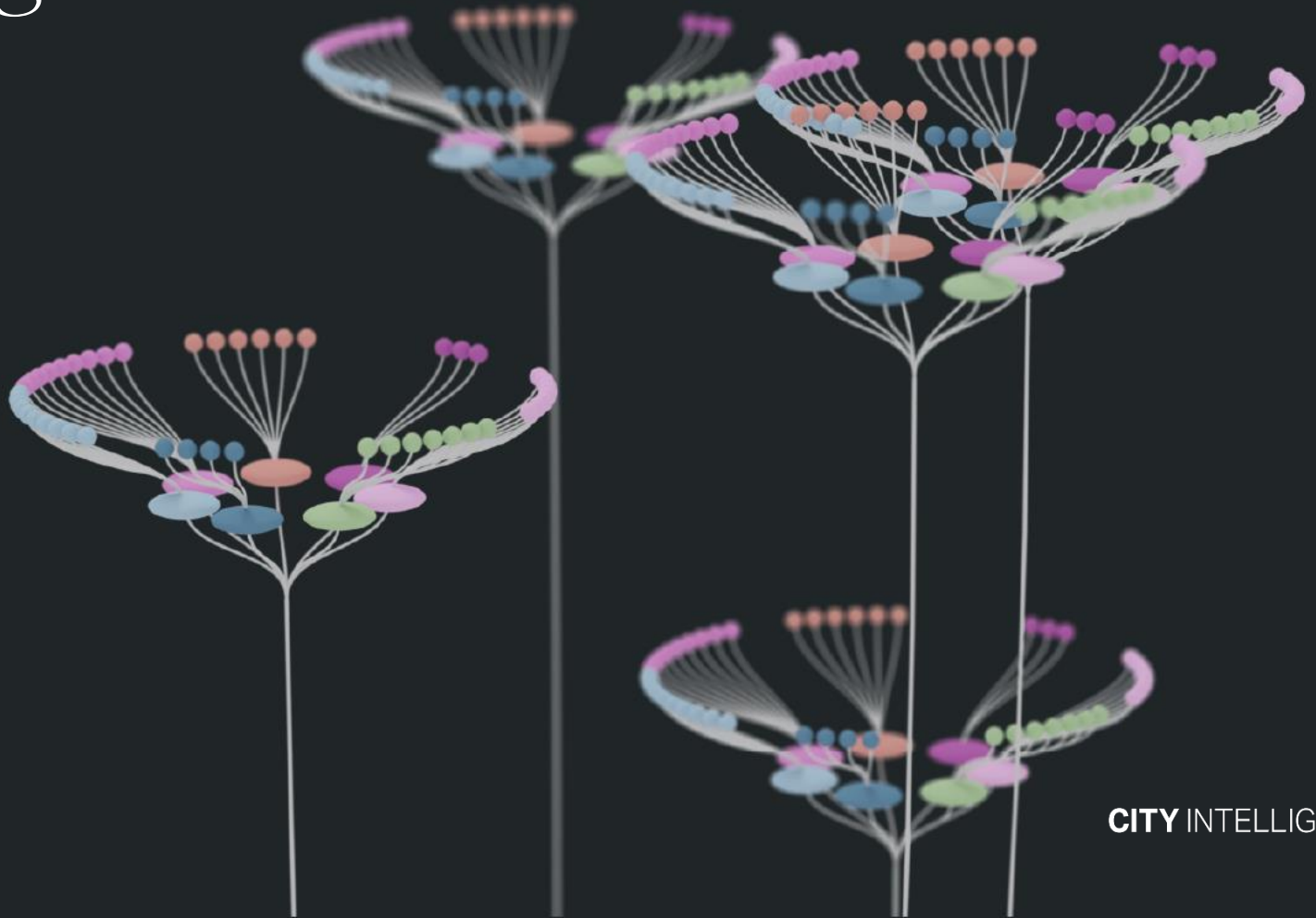


London's Wellbeing and Sustainability Measure

SRA Conference 2023
Yamini Cinamon Nair, GLA

MAYOR OF LONDON

 **London**
Wellbeing and Sustainability Measure

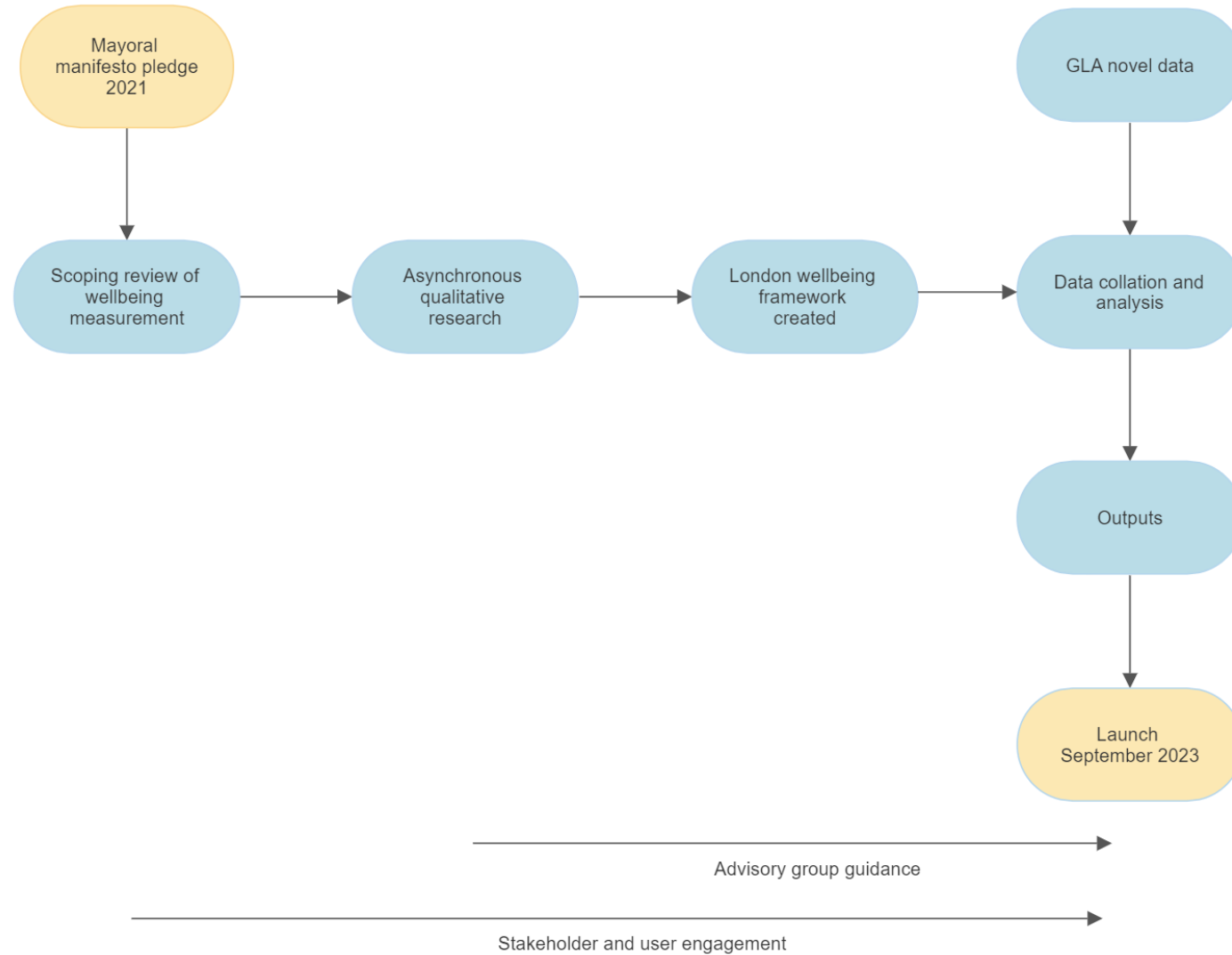


CITY INTELLIGENCE

Background to the London Wellbeing and Sustainability Measure

"...For years, we've measured prosperity — like most cities and countries — in terms of material wealth that is generated by our economic activity. But the strength, sustainability and wellbeing of our economy and society are not currently properly reflected..."

The development process



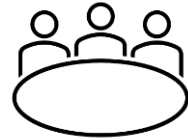
Qualitative research process



Digital diaries
December
2021



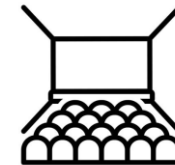
Focus groups
January 2022



**Community
engagement
sessions**
January 2022



**Talk London
consultation**
June-July 2022

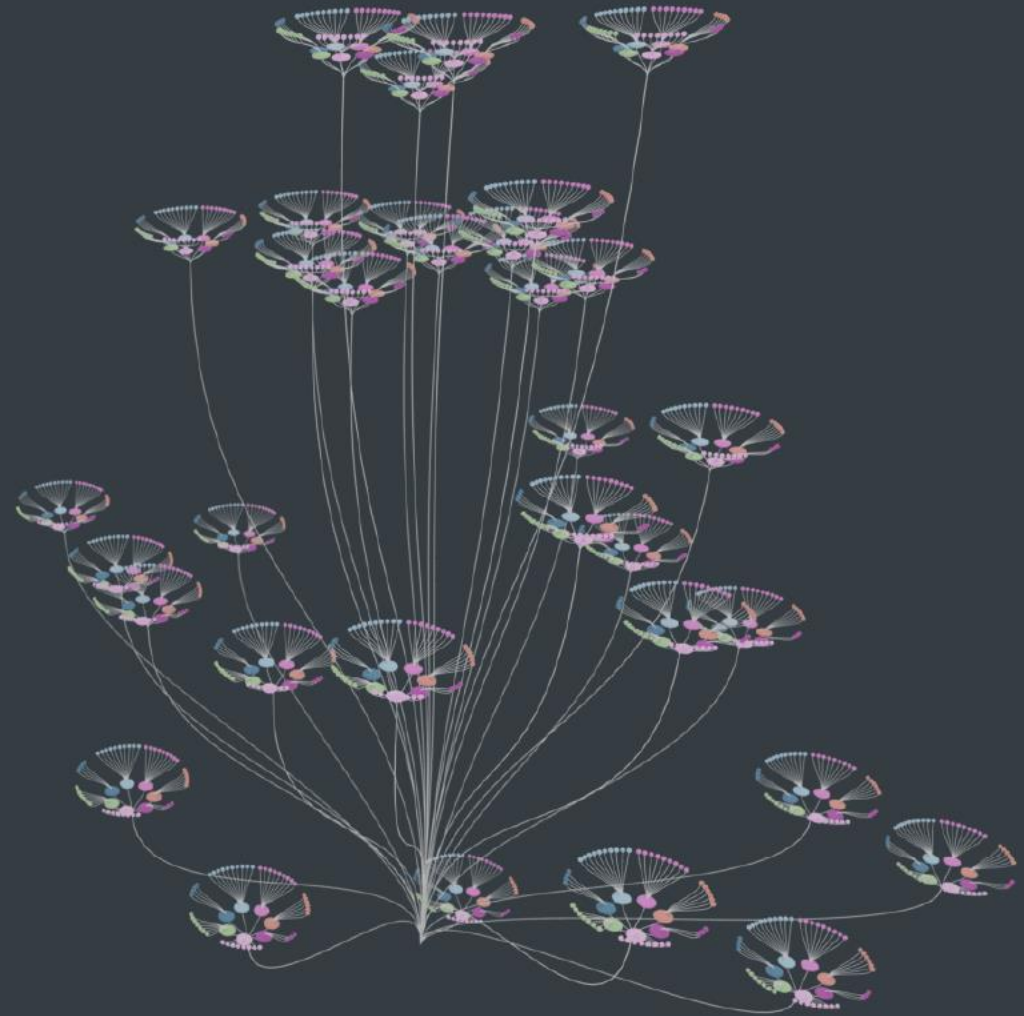


**Soft launch for
stakeholders**
January 2023



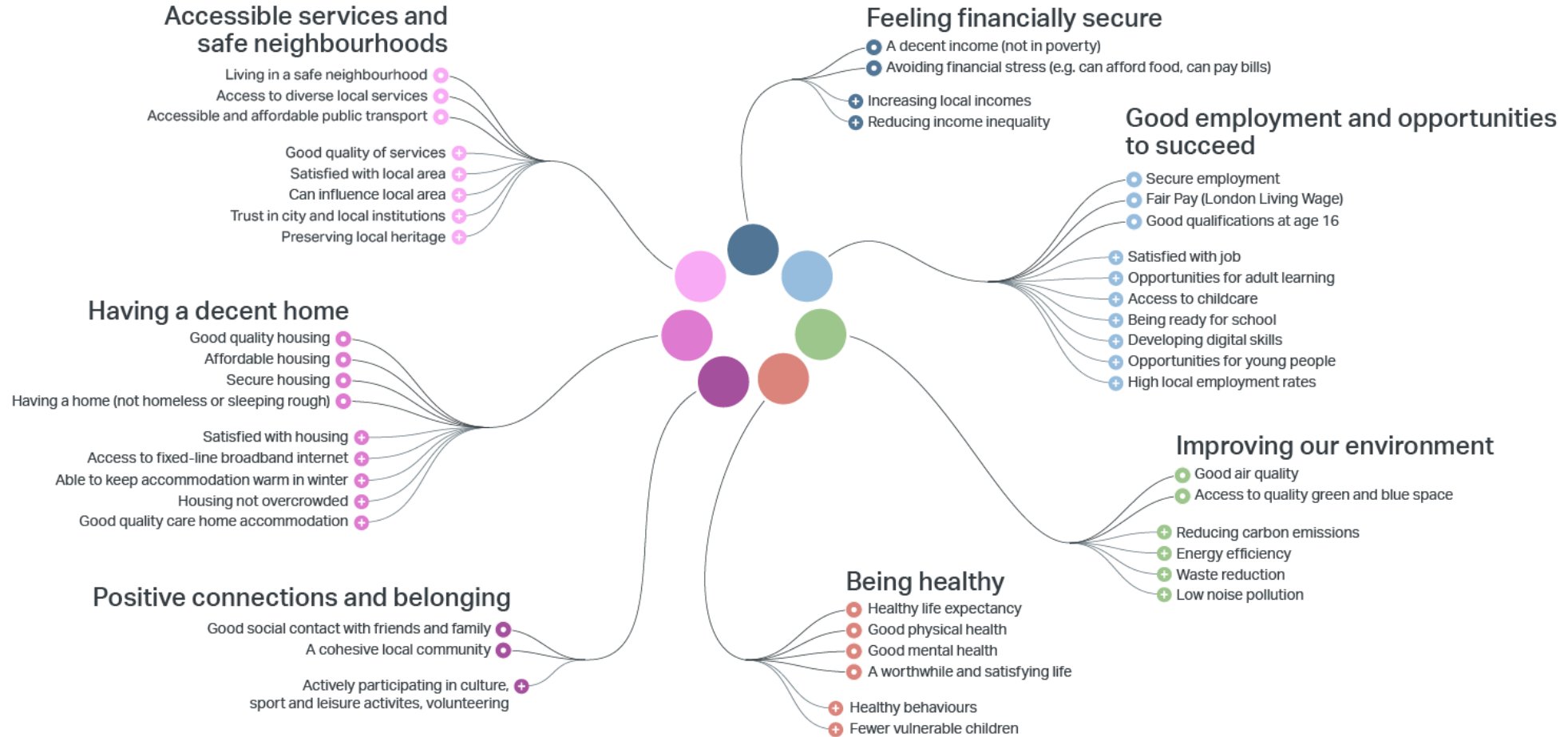
Core domains

- Feeling financially secure
- Good employment and opportunities to succeed
- Having a decent home
- Being healthy
- Positive connections and belonging
- Accessible services and safe neighbourhoods
- Improving our environment

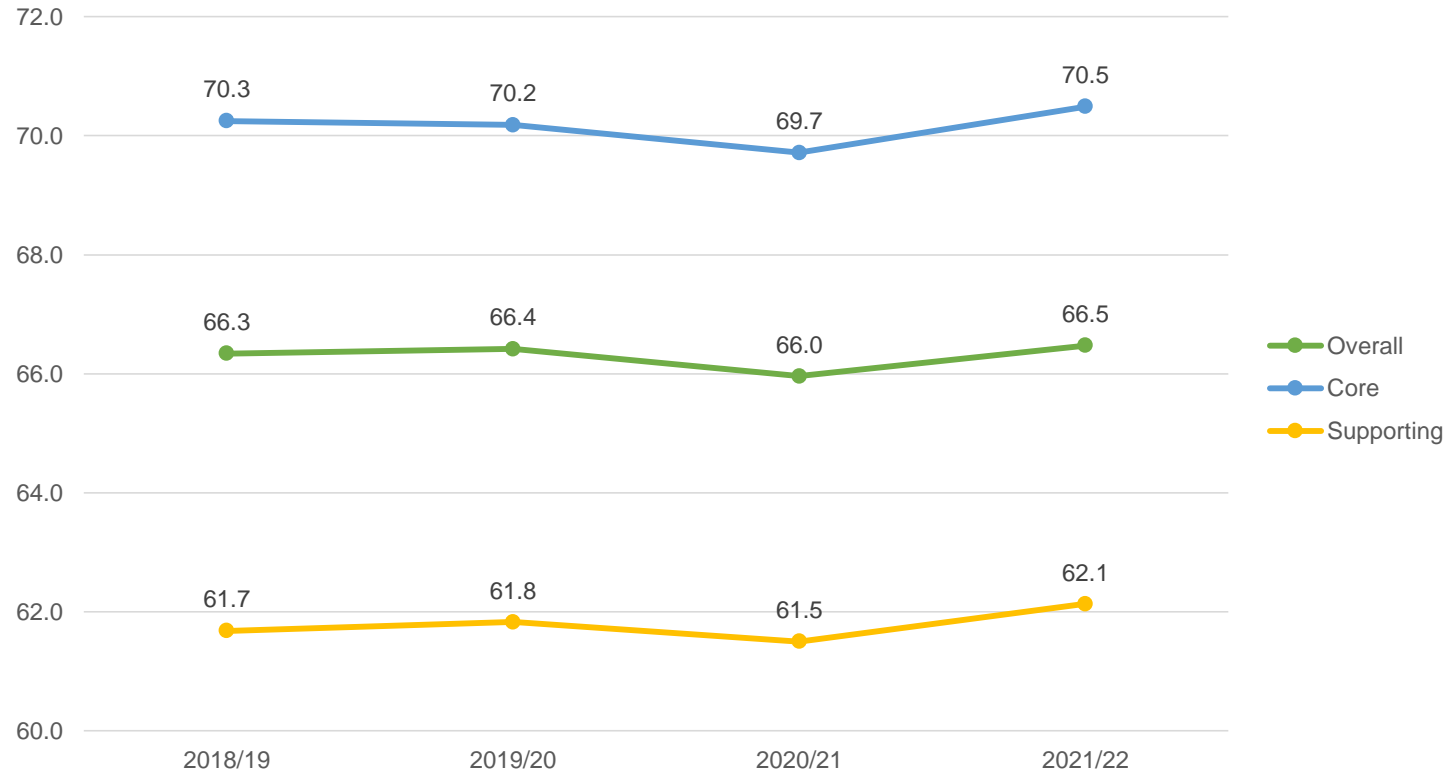


London's Wellbeing and Sustainability Measure

- **Core measures of wellbeing** - that are essential to ensuring a basic quality of life
- + **Supporting measures** - factors which support wellbeing once the core measures are in place



London's Wellbeing Index* **



*Note these are draft findings and liable to change as more data become available changing the scores

** Note these are not percentage scores, but means across the indicators



London's Wellbeing Index* **

	2018/19	2019/20	2020/21	2021/22
Overall	66.3	66.4	66.0	66.5
Feeling financially secure	71.0	70.9	71.0	73.2
Good employment and opportunities to succeed	69.3	69.7	69.1	69.1
Having a decent home	75.8	75.0	75.3	76.7
Being healthy	61.4	60.4	59.9	59.7
Positive connections and belonging	68.6	69.0	67.2	67.3
Accessible services and safe neighbourhoods	71.4	71.6	70.8	70.6
Improving the environment	50.4	51.6	51.6	52.2

The role of participatory approaches in wellbeing public policy

- Wellbeing as a 'thick' concept
- Beyond representation: giving a voice to marginalised groups
- Legitimacy through contextualism

BUT:

- Who's voice is represented
- Hierarchies of power within different settings
- Accessibility of data and technical expertise



Next steps

- June/July 2023 – user guide
- July/August 2023 – London's capital stocks research
- **September 2023** – launch of data explorer tool, analytical reports, promotional video
- February 2024 – start updating measure and automate as much as possible
- June 2024 – measure update

Conclusions: key takeaways for researchers and policymakers

1. Participatory approaches add value to wellbeing research
2. Place-specific public policy is essential
3. Outcomes frameworks: towards measuring the goal



Get in touch:

Yamini Cinamon Nair, Senior Research and
Statistical Analyst, City Intelligence Unit, GLA

yamini.cinamonnair@london.gov.uk

